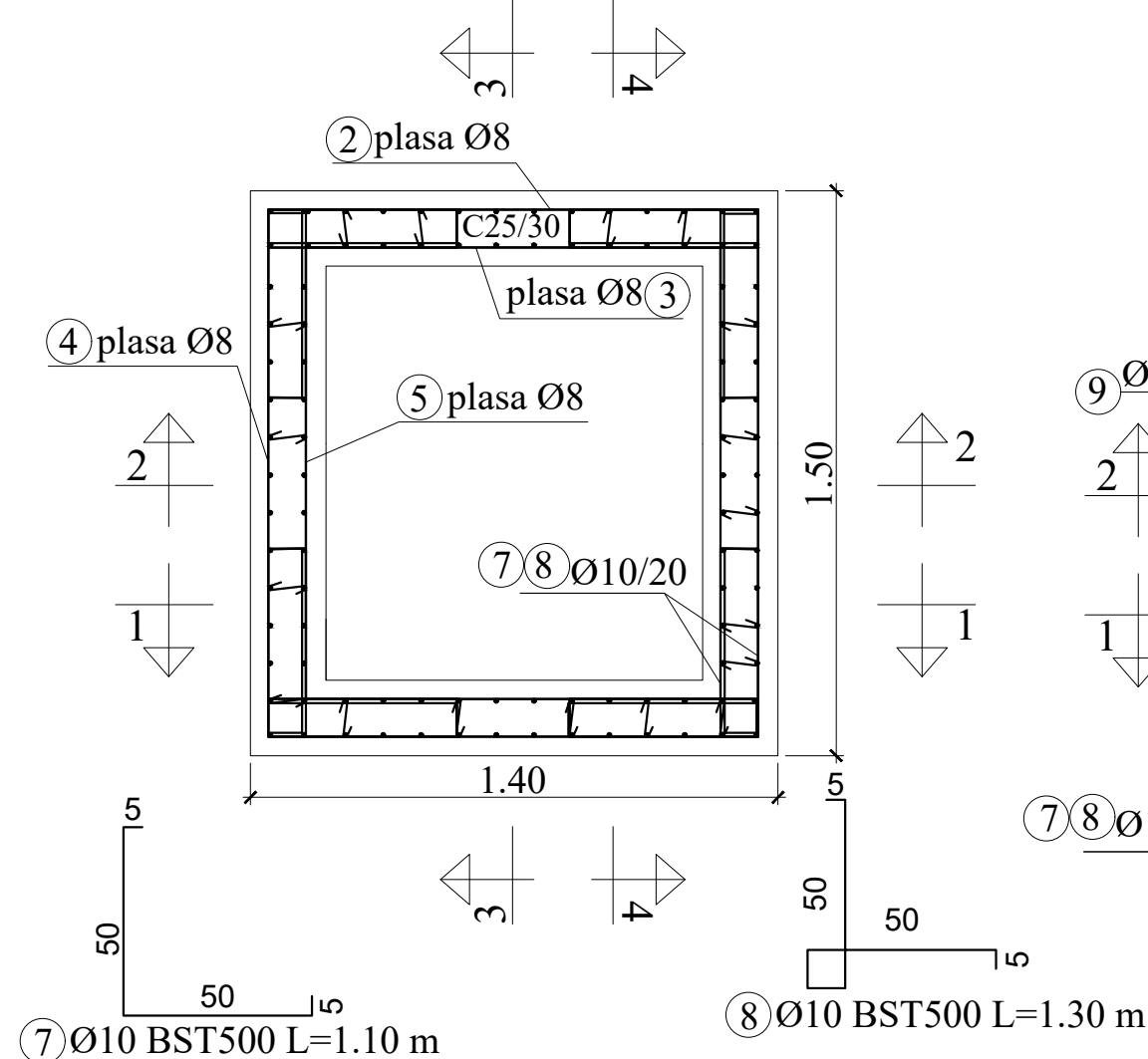
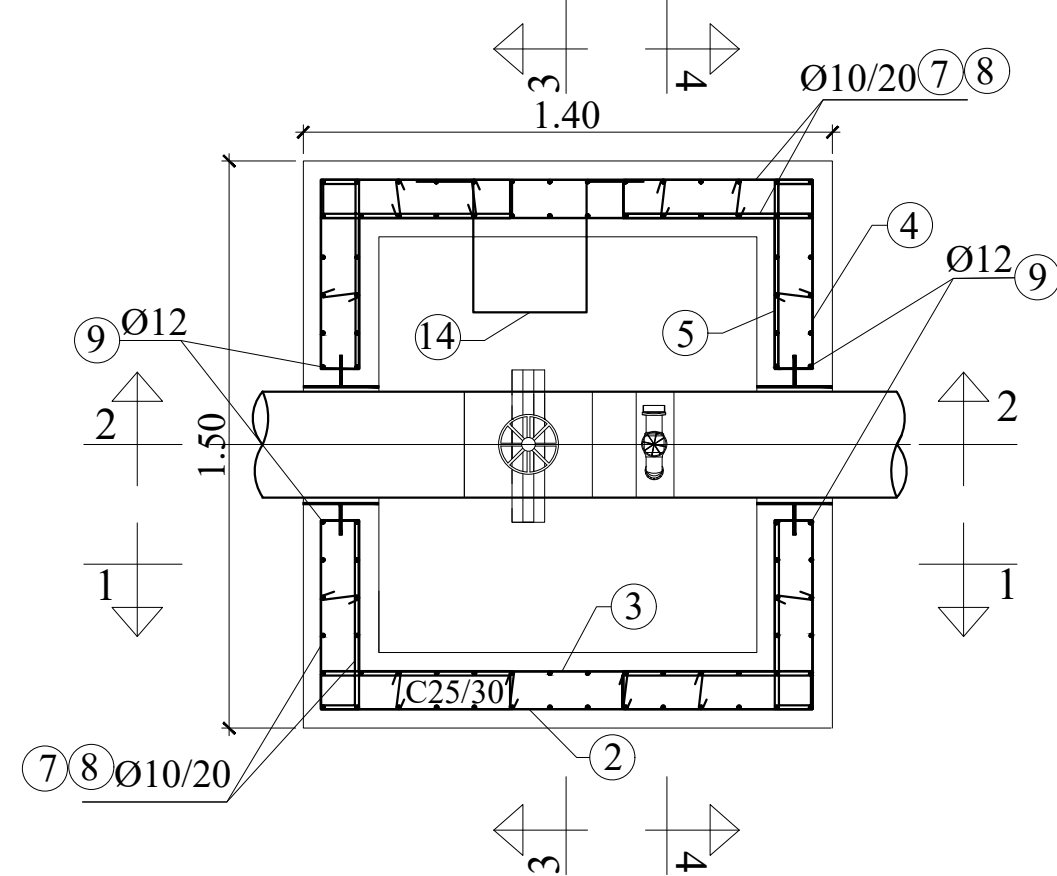


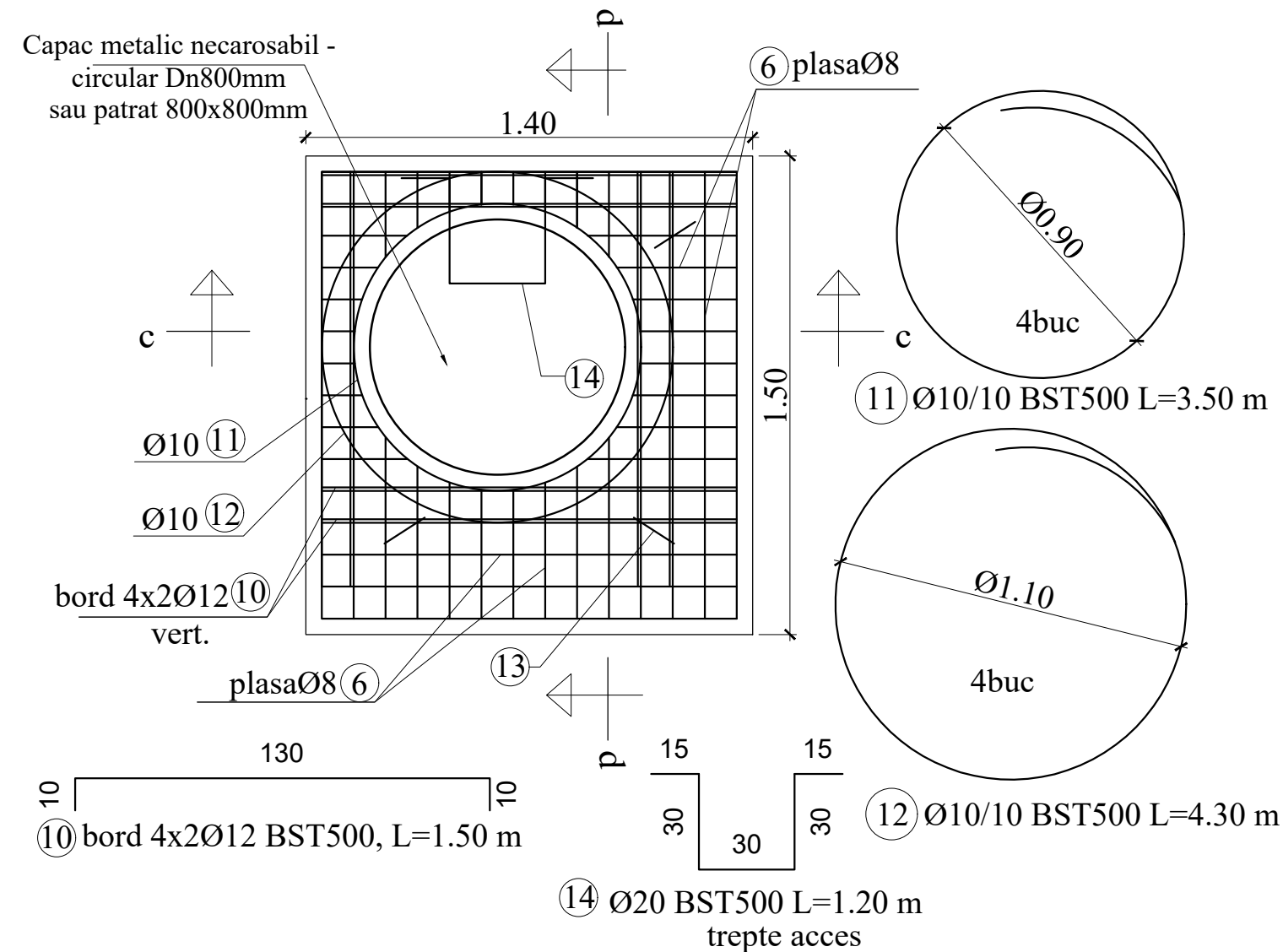
Scara 1:20



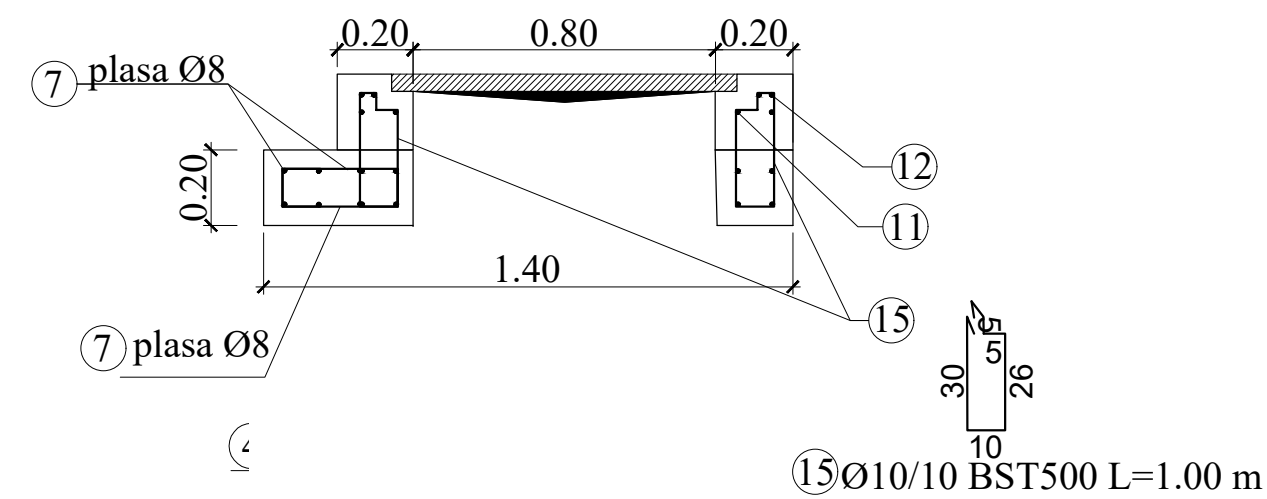
Scara 1:20



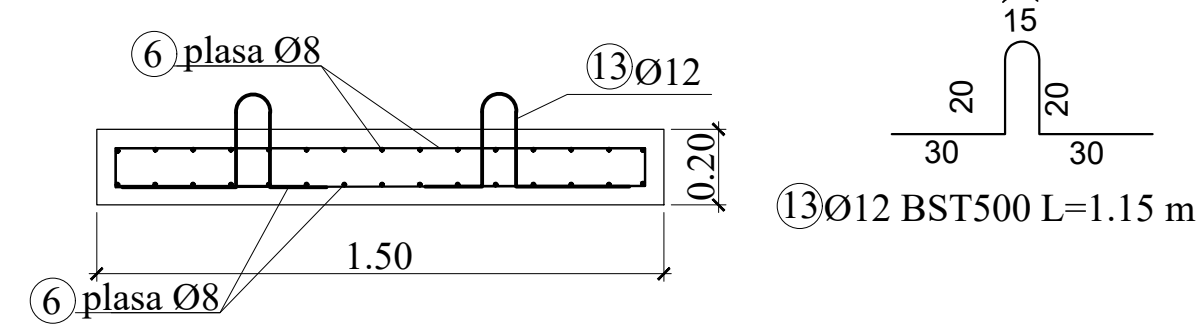
Scara 1:20



Scara 1:20

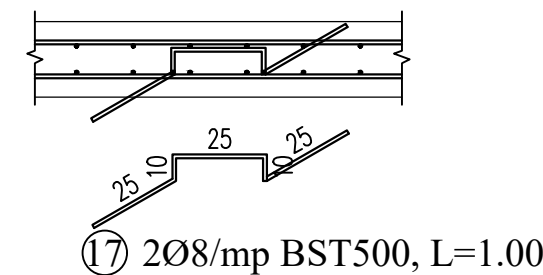


## Scara 1:20

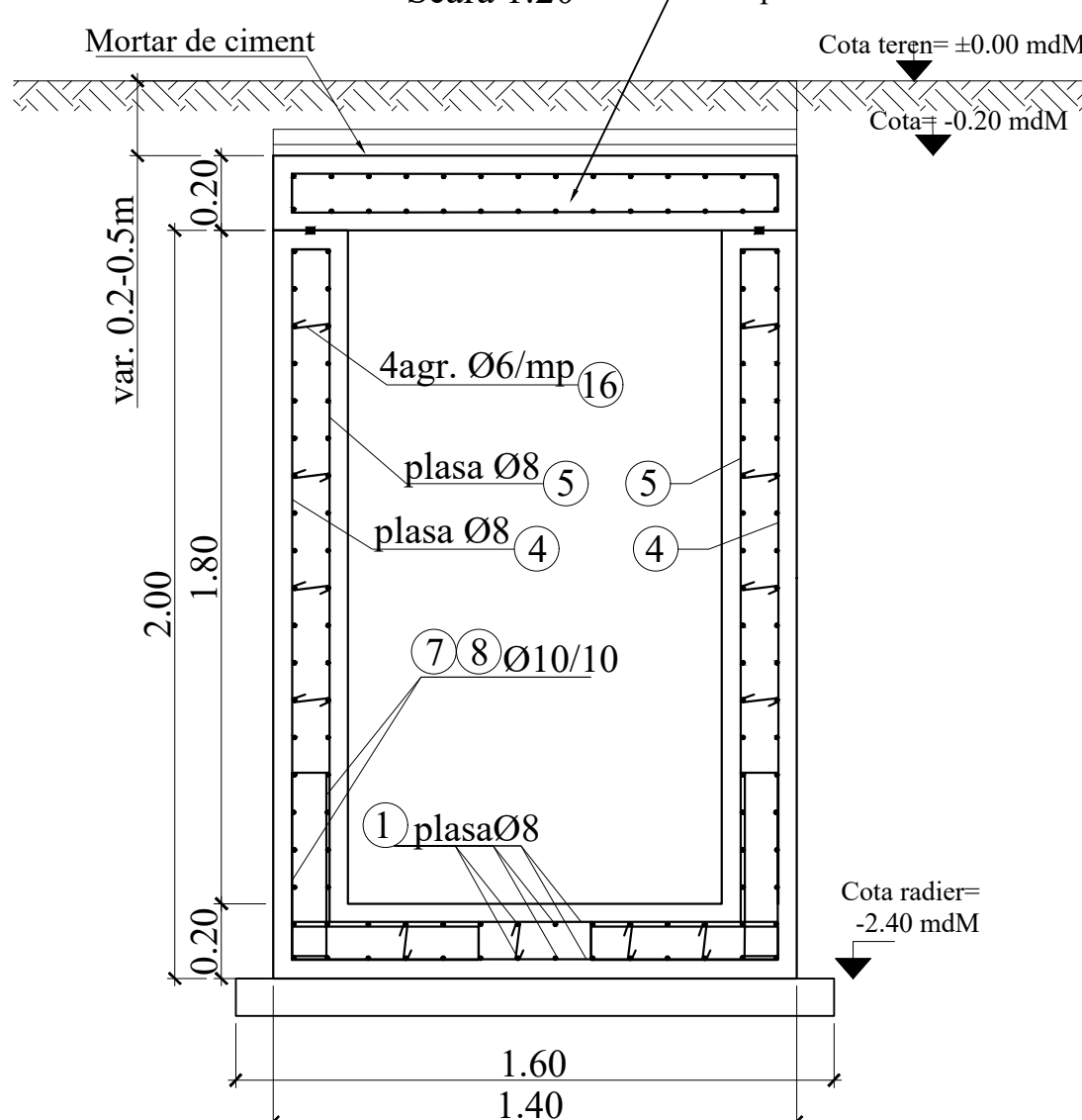


Placa din beton armat preturnata poate fi prevazuta si cu  
apac din fonta patrat 800 x 800mm, cu modificarea  
marcilor 6, 11 si 12.

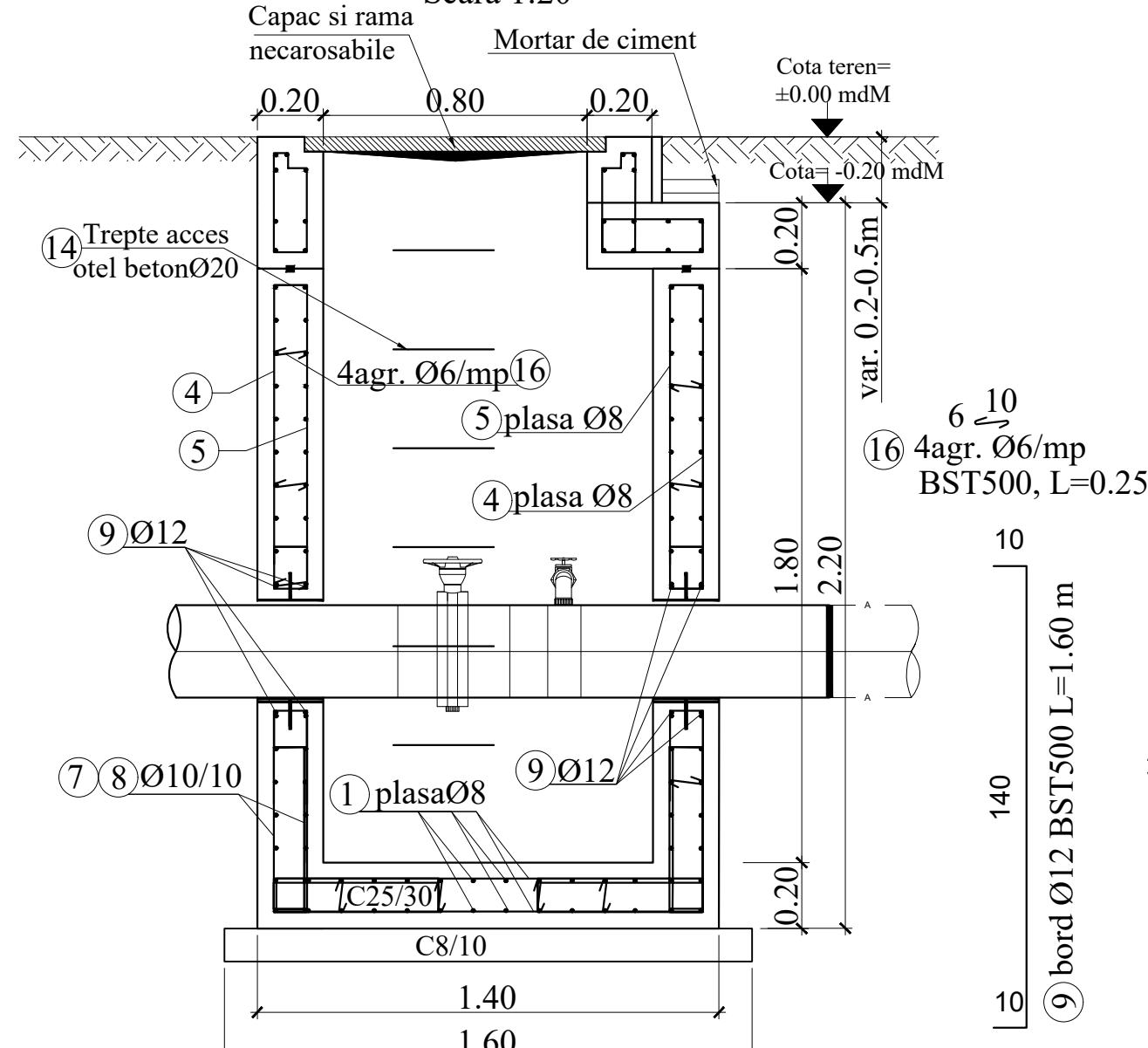
scara 1:20



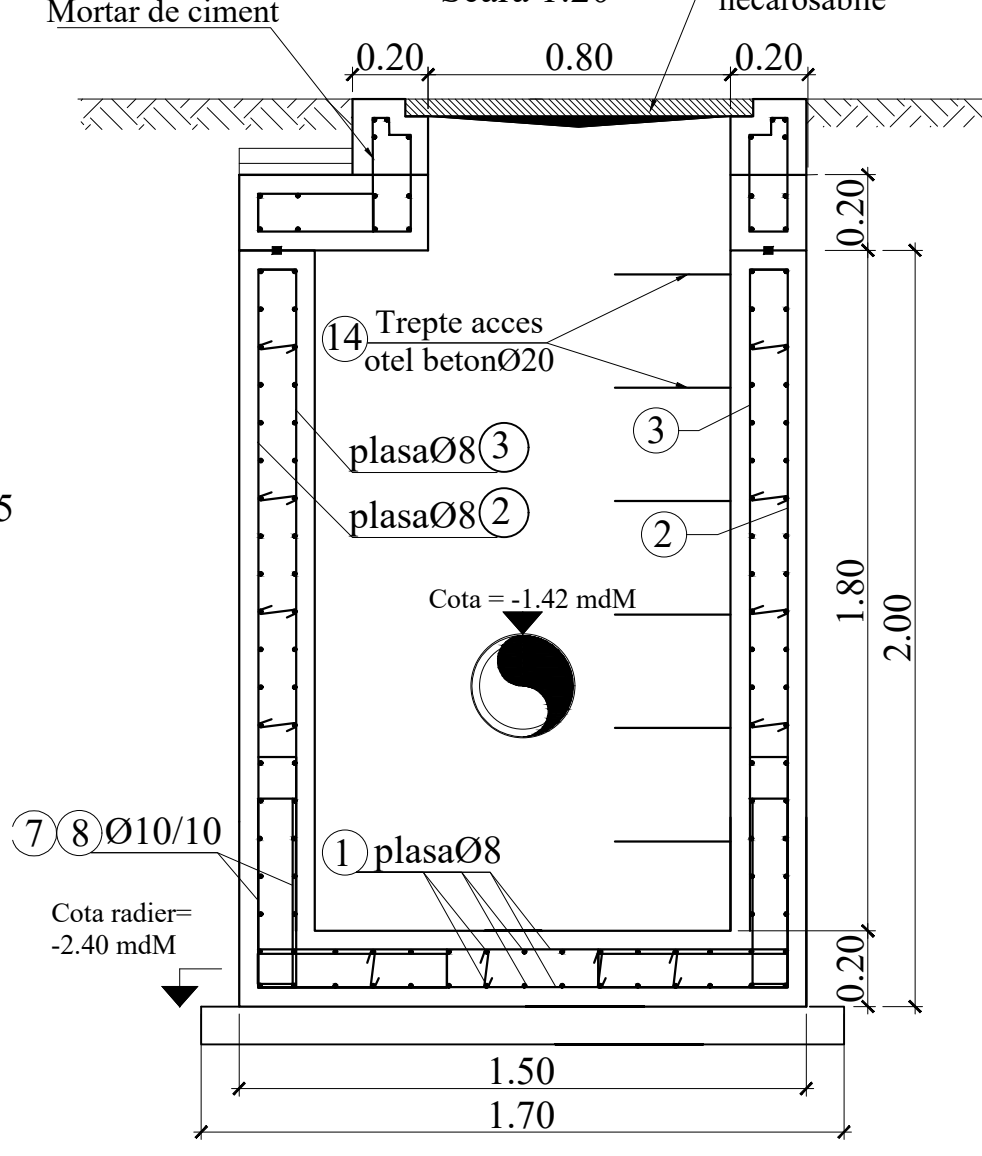
Scara 1:20



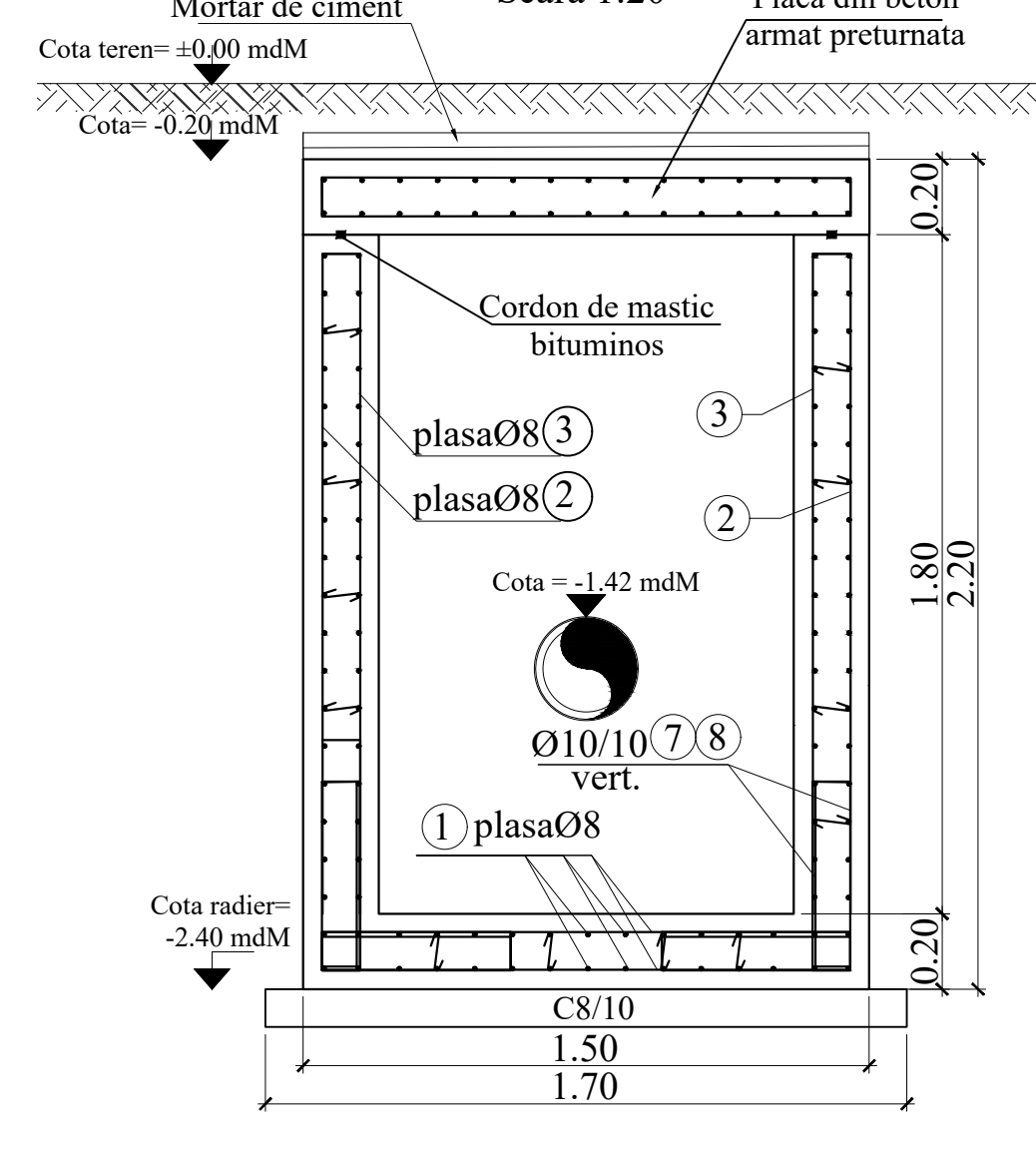
Scara 1:20



Scara 1:20



## Scara 1:2



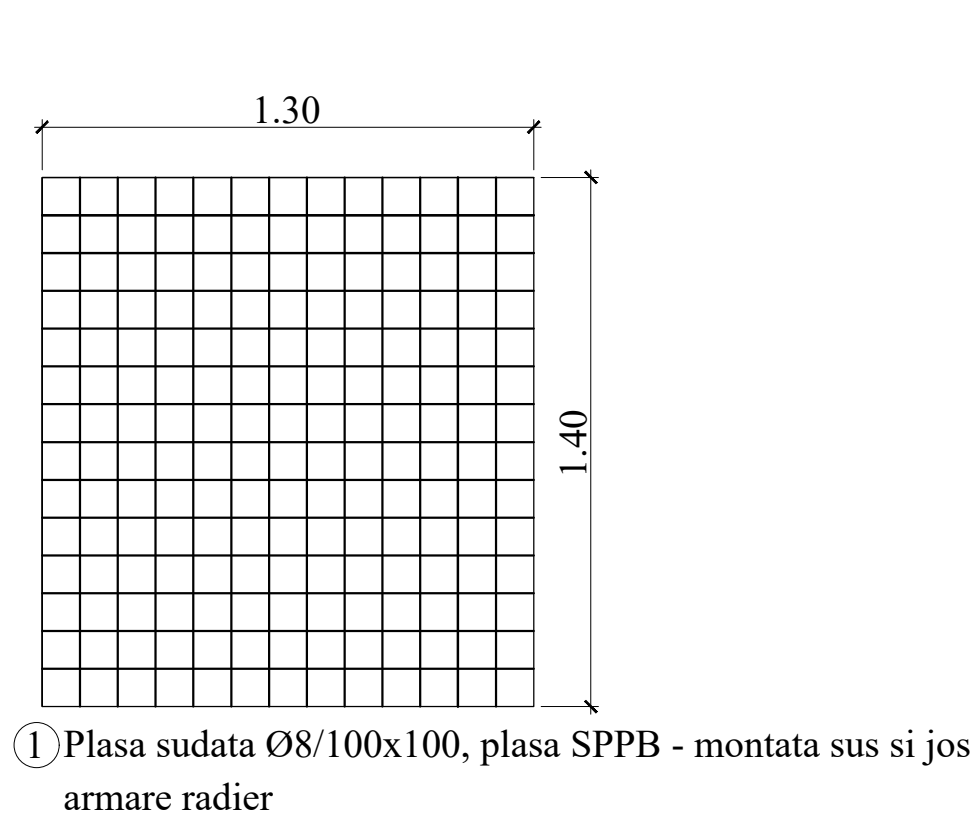
Extras de armatura										
Element	Marca	Otel	Diametru	Lungimea a unei bare	Numar bare	Lungimi pe diametre				
						BST500C				
						6	8	10	12	20
			[mm]	[m]	[buc.]	[m]	[m]	[m]	[m]	[m]
Carnu CV11	7	BST500C	10	1.10	98			107.80		
	8	BST500C	10	1.30	98			127.40		
	9	BST500C	12	1.20	16				19.20	
	10	BST500C	12	1.50	16				24.00	
	11	BST500C	10	3.50	3			10.50		
	12	BST500C	10	4.30	4			17.20		
	13	BST500C	20	1.15	3					3.4
	14	BST500C	20	1.20	6					7.20
	15	BST500C	10	1.00	8			8.00		
	16	BST500C	6	0.25	35	8.75				
	17	BST500C	8	1.00	13		13.00			
	Total lungimi pe diametre					[m]	8.75	13.00	270.90	43.20
Masa pe metrul linear					[kg/m]	0.222	0.395	0.617	0.888	2.46
Masa pe diametre					[kg]	2	6	168	39	27
Masa totala pe tipuri de otel					[kg]		8			234
Masa totala montata					[kg]				242	
Pierderi [%]					[kg]				13	
Masa totala aproximativata					[kg]				255	
Beton C25/30					[m]				2.63	
Beton C30					[m]				9.25	

Extras de plase sudute						
Element	Marca	Descriere	Dimensiuni [mm]	Greutate pe bucata [kg]	Nr. bucati [buc]	Greuta totala [kg]
Canin CV11	1	Plasi sudate SR 438-3 - 1000m x 1000m - 5m x 2m, SPPB 8	1300 x 1400	14	2	28
	2	Plasi sudate SR 438-3 - 1000m x 1000m - 5m x 2m, SPPB 8	1300 x 1900	19	2	38
	3	Plasi sudate SR 438-3 - 1000m x 1000m - 5m x 2m, SPPB 8	1100 x 1800	15	2	31
	4	Plasi sudate SR 438-3 - 1000m x 1000m - 5m x 2m, SPPB 8	1400 x 1900	19	2	39
	5	Plasi sudate SR 438-3 - 1000m x 1000m - 5m x 2m, SPPB 8	1200 x 1800	16	2	31
	6	Plasi sudate SR 438-3 - 1000m x 1000m - 5m x 2m, SPPB 8	1300 x 1400	9	2	17
				<b>Total [kg]</b>	<b>16<sup>7</sup></b>	

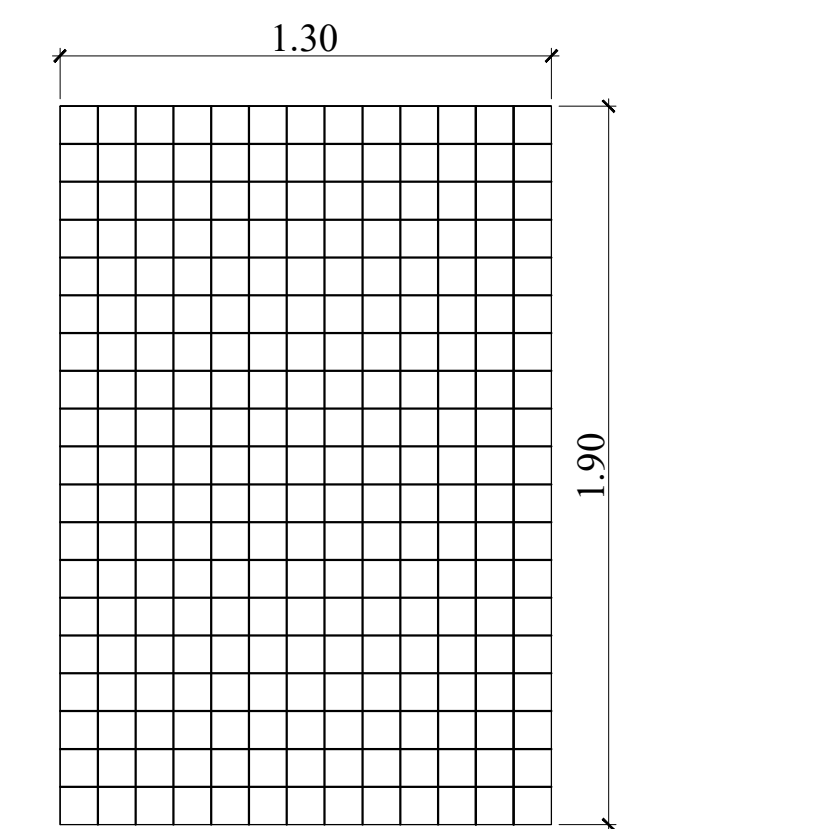
BETON SIMPLU: C8/10 -X0 - Cl 0.2 - Dmax22  
BETON ARMAT : C25/30 -XC2- Dmax22, CEM II/A-LL 42.5 R  
OTEL BETON: BST 500C  
PLASA SPBP- SR 438-3:2012  
ACOPERIRE CU BETON, a=5cm

1. Executantul are obligatia sa verifice toate dimensiunile pe santier, inainte de procurarea materialelor si in inceperea executiei, pentru toate categoriile de lucrari.
2. Se efectueaza masuratori pe cofraj inainte de debitarul si fasonarea barelor si a plasilor de armatura.
3. La plesile de armatura verticale se face debitarul dupa stabilirea exacta a cotelor de adancime a caminelor.
4. Capacul de acces in camin se va alege in functie de pozitia caminului fata de drum:
  - camin carosabil va fi echipat cu capac carosabil clasa D400;
  - camin necarosabil cu capac necarosabil clasa C250;
5. Toate capacele de forma rotunda sau patrata vor fi din fonta.

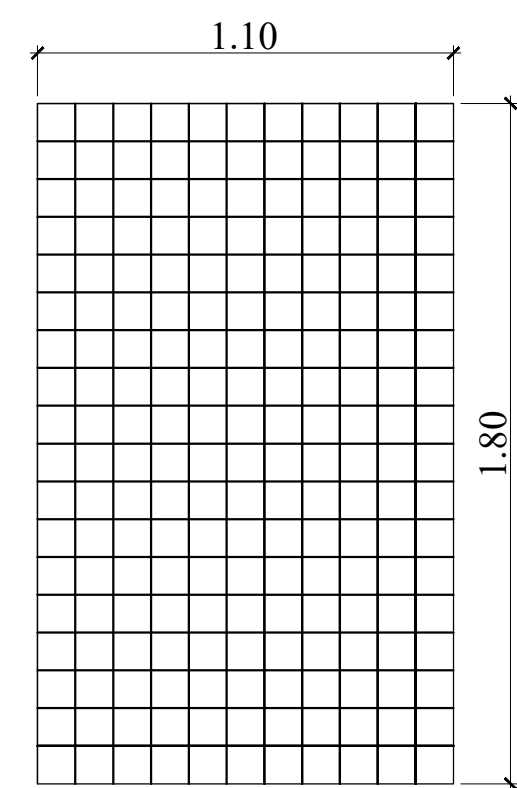
Adancimea caminului se va stabili cu exactitate in timpul lucrarilor de executie, functie de adancimea de pozare a conductei existente.



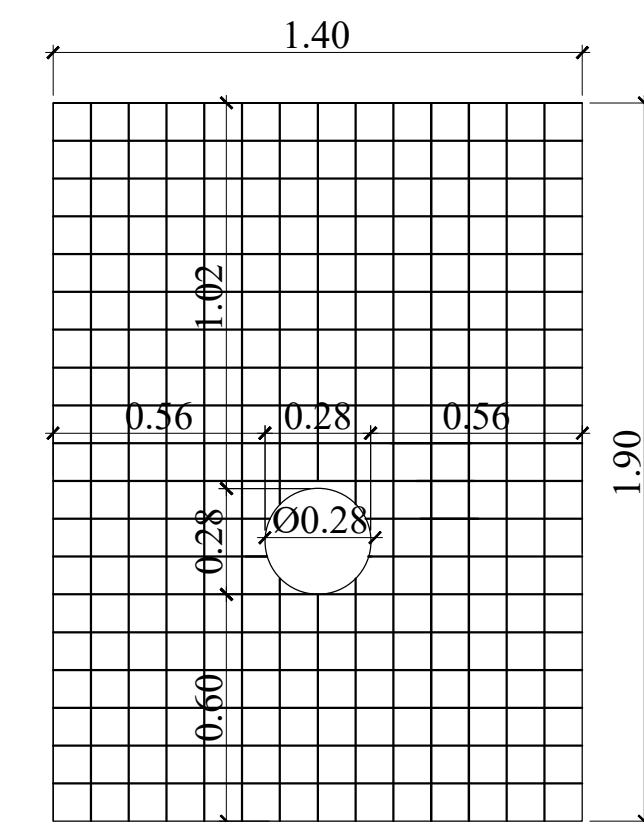
① Plasa sudata Ø8/100x100, plasa SPPB - montata sus si jos  
armare radier



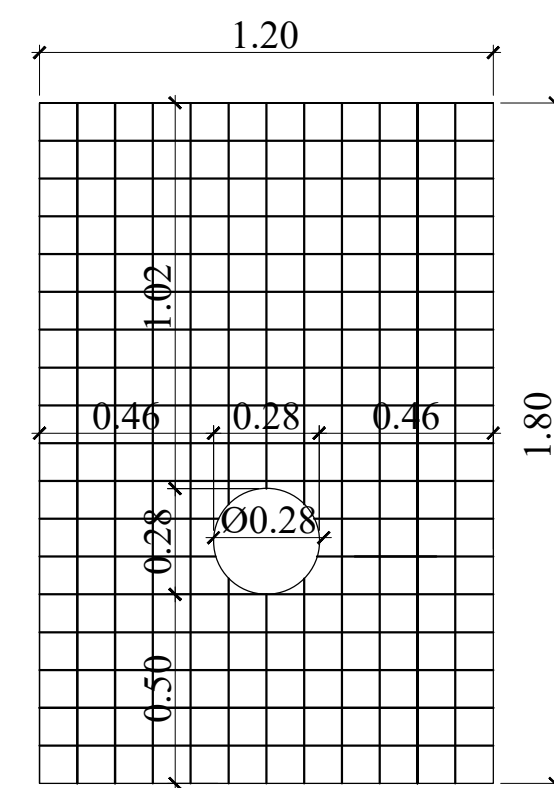
② Plasa sudata Ø8/100x100, plasa SPPB - exterior  
armare pereti



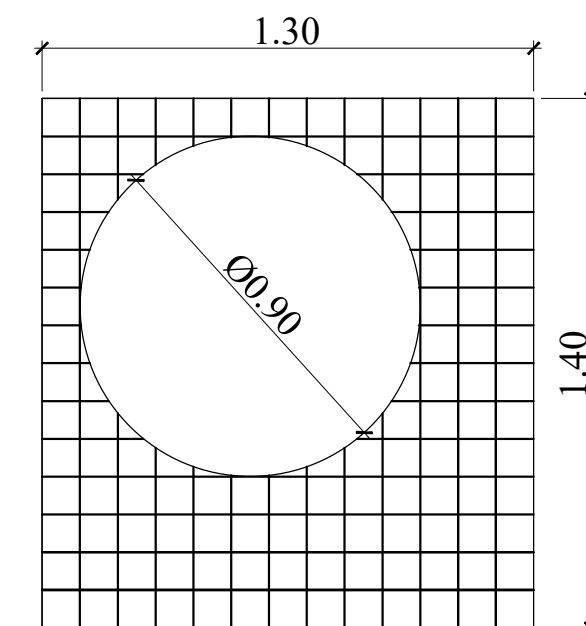
③ Plasa sudata Ø8/100x100, plasa SPPB - interior  
armare pereti






④ Plasa sudata Ø8/100x100, plasa SPPB - exterior  
armare pereti



⑤ Plasa sudata Ø8/100x100, plasa SPPB - interior  
armare pereti



⑥ Plasa sudata Ø8/100x100, plasa SPPB - montata sus si jos  
armare placa

<div>INVESTITOR</div> <div></div> <div>COMPANIA NATIONALA DE ADMINISTRARE A INFRASTRUCTURII RUTIERE S.A.</div>	<div>ANTREPRENOR</div> <div>PROIECTANT GENERAL TIRRENA SCAVI S.p.A.</div> <div></div> <div>TIRRENA SCAVI S.p.A. <small>INGEGNERIA - PROGETTAZIONE - COSTRUZIONE</small></div>	<div>AMPLASAMENT</div> <div></div>	<div>DENUMIRE PROIECT</div> <div>PROIECTARE SI EXECUTIE "VARIANTA DE COULIRE TIMISCAPIA SUD"</div> <div>NUMAR CONTRACT : 92/87467/19.12.2018</div> <div>NUMAR PROIECT : 10036</div>	FAZA PROIECT P.T. + D.D.E.		Manager de Proiect ing. Ivo Procasz	<table><tr><th colspan="3">REVIZII</th></tr><tr><th>NR. REV.</th><th>DATA</th><th>SEM.N.</th></tr><tr><td colspan="3">DENUMIRE PLANSA</td></tr><tr><td colspan="3">PLAN ARMARE CAMIN Cv11</td></tr><tr><td colspan="3">Scala : 1:20</td></tr><tr><td colspan="3">NUMAR PLANSA</td></tr><tr><td colspan="3">10936-VOTM-RA-PA-02</td></tr></table>			REVIZII			NR. REV.	DATA	SEM.N.	DENUMIRE PLANSA			PLAN ARMARE CAMIN Cv11			Scala : 1:20			NUMAR PLANSA			10936-VOTM-RA-PA-02		
				REVIZII																										
				NR. REV.	DATA	SEM.N.																								
				DENUMIRE PLANSA																										
PLAN ARMARE CAMIN Cv11																														
Scala : 1:20																														
NUMAR PLANSA																														
10936-VOTM-RA-PA-02																														
Data : 11.2020		Ser Echipa Proiectare ing. Silvan Moldovan																												
VERIFICATOR TEHNIC		Inginer Proiectant ing. Marius Iordache																												
		Inginer Aprobat ing. Elena Manea																												